

MD1231A-04
MX123002A
MX123001A-01
MX123003A

MD1231A Decode Module
MD1230A Expert Analysis Module
Remote Control Software for MD1230A-04
Remote Control Software for MX123002A

Advanced Protocol Module

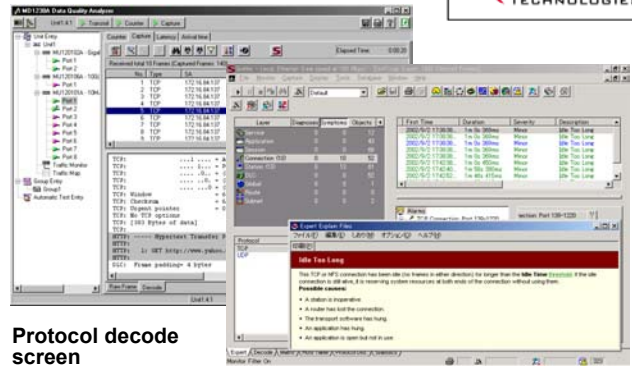
MU120111A **10/100 Mb Ethernet Module**
MU120112A **Gigabit Ethernet Module**
Version 2.1 Function Upgrades



MD1231A IP Network Analyzer

Powered by Sniffer® Technologies

As network technologies evolve and become more complicated, network analysis and fault detection becomes ever more important. To help network professionals build, operate, and maintain their data networks, Anritsu offers Network Associates' industry-leading Sniffer® Technologies network fault analysis software for the MD1231A. With Sniffer Technologies software and the MD1231A, you can now more than ever reduce network downtime and ensure network availability.



Protocol decode screen

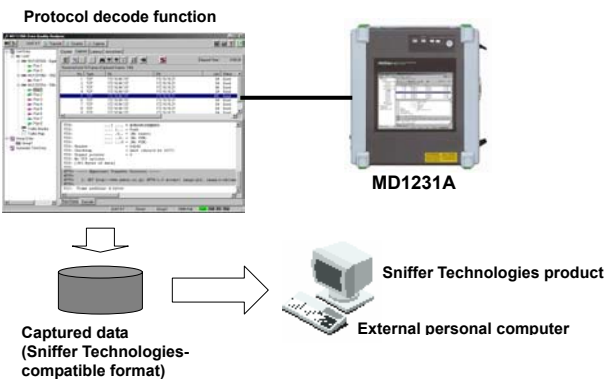
Expert network analysis screen

MD1231A-04: MD1231A Decode Module

With the MD1231A Decode Module installed, the MD1231A protocol decode function is extended to support nearly 400 protocol decodes in captured data for almost every LAN and WAN network topology. The protocols supported include Cisco protocols such as CDP, DISL, DRiP, VTP, ISL, PAGP, and CGMP; and VoIP protocols such as H.225, H.245, MGCP, and SIP. This function supports all seven layers of the OSI reference model, providing complete analysis for any network.

Saving Captured Data in Sniffer Technologies-Compatible Format

The MD1231A Decode Module saves captured traffic in the industry-standard CAP format so that the files can be read by almost any protocol analyzer.



Operation of the MD1231A Decode Module

MX123002A: MD1230A Expert Analysis Module

Using the MD1230A Expert Analysis Module with the MD1231A Decode Module makes both the Sniffer Technologies protocol decode and network analysis functions available for captured data.

Protocol Decode Function

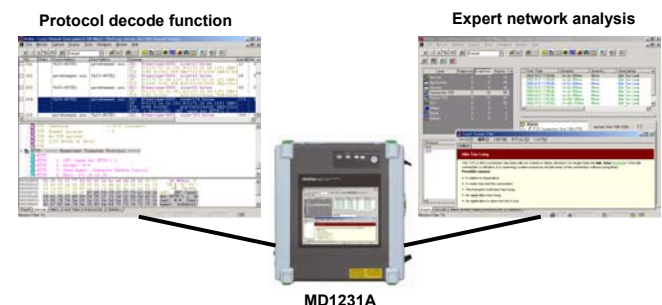
Like the MD1231A Decode Module, the MD1230A Expert Analysis Module can decode nearly 400 protocols.

Expert Network Analysis Function

The expert network analysis function automatically detects faults and fault symptoms in networks and network equipment, providing detailed troubleshooting information. Each fault is classified and organized as a "Diagnosis" or a "Symptom". The user is presented with an easy-to-understand Expert Screen for reviewing fault messages and recommended corrective actions.

Look and Feel of Sniffer Technologies Software

The MD1230A Expert Analysis Module is an OEM version of Network Associate's Sniffer Portable 4.7 and Sniffer Voice 2.1 software. It has all of the functions and features of both products.



Operation of the MD1230A Expert Analysis Module

Functions Supported by Version 2.1

The MD1231A functional upgrade version 2.1 adds support for the MU120111A 10/100 Mb and MU120112A Gigabit Ethernet Advanced Protocol Modules as well as the following functions.

Function	MU120101A 10/100 Mb Ethernet Module	MU120102A Gigabit Ethernet Module	MU120111A 10/100 Mb Ethernet Module	MU120112A Gigabit Ethernet Module
MD1231A-07 OSPF Protocol Option			X	X
MD1231A-08 MPLS (LDP/CR-LDP) Protocol Option			X	X
MD1231A-09 MPLS (RSVP) Protocol Option			X	X
MD1231A-10 RFC2889 Benchmarking Test Option		X	X	X
MD1231A-12 IPv6 Expansion Option			X	X
Protocol expansion or addition	BGP-4 emulation function expansion			
		X	X	X
		X	X	X
		X	X	X
		X	X	X
		X	X	X
1000BASE-T support				X
Monitor mode support				X
Service disruption time measurement				X
TCP/UDP port number increment function				X
BER measurement	Unframed BER test			
		X	X	X
	MD1231A-11 Packet BER Test Option			
	X	X	X	X

X: Supported function N/A: Not applicable

Ordering Information

The MD1231A family includes these newly added products and options. Refer to the separate MD1231A datasheet regarding existing MD1231A family products. Please specify model/order number, name, and quantity when ordering.

Model/Order No.	Name
Options	
MD1231A-04	MD1231A Decode Module
MD1231A-06	Tcl Interface
MD1231A-07	OSPF Protocol
MD1231A-08	MPLS (LDP/CR-LDP) Protocol
MD1231A-09	MPLS (RSVP) Protocol
MD1231A-10	RFC2889 Benchmarking Test
MD1231A-11	Packet BER Test
MD1231A-12	IPv6 Expansion
Plug-in Modules	
MU120111A	10/100 Mb Ethernet Module
MU120112A	Gigabit Ethernet Module
Software	
MX123001A-01	Remote Control Software for MD1230A-04 *1
MX123002A	MD1230A Expert Analysis Module *2
MX123003A	Remote Control Software for MX123002A *3
Maintenance Service	
MD1231A-41	Annual Software Maintenance for MD1231A-04 *4
MD1231A-42	Annual Software Maintenance for MX123002A *4
MU120111A-90	Extended three year warranty service
MU120112A-90	Extended three year warranty service

Model/Order No.	Name
Optional Accessories	
G0105A	GBIC SX 850 nm *5
G0106A	GBIC LX 1310 nm *5
G0107A	GBIC LH 1310 nm *5
G0108A	GBIC ZX 1550 nm *5
G0124A	GBIC T (1000BASE-T) *5
Z0627	USB CD-ROM Drive
W1931W	Operation Manual: MU120101/02/11/12/18A
W2107AW	Operation Manual: MD1230A-04 MD1230A Decode Module, MX123001A-01 Remote Control Software for MD1230A-04
W2108AW	Operation Manual: MX123002A Expert Analysis Module, MX123003A Remote Control Software for MX123002A
W2122AW	Operation Manual: MD1230A-06 Tcl Interface

*1 MX123001A/-05/-08 Data Quality Analyzer Control Software and MD1231A-04 MD1231A Decode Module are required.

*2 MD1231A-04 MD1231A Decode Module is required.

*3 The following are required:

MX123001A/-05/-08 Data Quality Analyzer Control Software, MD1231A-04 MD1231A Decode Module, MX123001A-01 Remote Control Software for MD1230A-04, and MX123002A MD1230A Expert Analysis Module.

*4 Users with a software maintenance agreement can upgrade the MD1231A-04 or MX123002A function free of charge for one year.

*5 GBIC modules are sold separately. MU120112A can accommodate two GBIC interfaces.

Sniffer logo of Network Associates and Network Associates are registered trademarks of Network Associates, Inc. and/or its affiliates in the US and/or other countries. All other registered and unregistered trademarks in this document are the sole property of their respective owners.